

DATA SHEET



Three Phase Induction Motor - Squirrel Cage

Customer :								
Product line	: W22 NEMA Premium Efficiency Three-Phase	Product code :	11807180					
		Catalog # :	01036ET3E215TF3-W22					
Frame	: 215T	Locked rotor time	: 32s (cold) 18s (hot)					
Output	: 10 HP (7.5 kW)	Temperature rise	: 80 K					
Poles	: 2	Duty cycle	: Cont.(S1)					
Frequency	: 60 Hz	Ambient temperature	: -20°C to +40°C					
Rated voltage	: 230/460 V	Altitude	: 1000 m.a.s.l.					
Rated current	: 23.2/11.6 A	Protection degree	: IP55					
L. R. Amperes	: 167/83.5 A	Cooling method	: IC411 - TEFC					
LRC	: 7.2x(Code H)	Mounting	: F-3					
No load current	: 7.20/3.60 A	Rotation ¹	: Both (CW and CCW)					
Rated speed	: 3530 rpm	Noise level ²	: 68.0 dB(A)					
Slip	: 1.94 %	Starting method	: Direct On Line					
Rated torque	: 14.9 ft.lb	Approx. weight ³	: 176 lb					
Locked rotor torque	: 220 %							
Breakdown torque	: 290 %							
Insulation class	: F							
Service factor	: 1.25							
Moment of inertia (J)	: 0.6362 sq.ft.lb							
Design	: B							
Output	25% 50% 75% 100%	Foundation loads						
Efficiency (%)	89.3 88.5 89.5 88.6 90.2 89.6 90.2 89.5 88.3 87.2 88.4 87.7 89.6 89.5 89.5 89.8 90.2 90.2 89.5 89.5 89.5 89.5 88.5 88.5 90.2 89.5 89.5 89.5 88.5	Max. traction	: 185 lb					
Power Factor	0.53 0.50 0.79 0.75 0.87 0.86 0.90 0.90 0.47 0.45 0.72 0.70 0.83 0.82 0.88 0.86 0.60 0.56 0.83 0.81 0.90 0.88 0.91 0.91 0.54 0.79 0.87 0.90	Max. compression	: 361 lb					
Losses at normative operating points (speed;torque), in percentage of rated output power								
Losses (%)	P1 (0,9;1,0)	10.7	10.7	10.7	10.7	10.7	10.7	10.7
	P2 (0,5;1,0)	8.7	8.7	8.7	8.7	8.7	8.7	8.7
	P3 (0,25;1,0)	7.8	7.8	7.8	7.8	7.8	7.8	7.8
	P4 (0,9;0,5)	5.2	5.2	5.2	5.2	5.2	5.2	5.2
	P5 (0,5;0,5)	3.3	3.3	3.3	3.3	3.3	3.3	3.3
	P6 (0,5;0,25)	2.1	2.1	2.1	2.1	2.1	2.1	2.1
	P7 (0,25;0,25)	1.3	1.3	1.3	1.3	1.3	1.3	1.3
Bearing type	:	<u>Drive end</u> 6308 ZZ	<u>Non drive end</u> 6207 ZZ					
Sealing	:	V'Ring	V'Ring					
Lubrication interval	:	-	-					
Lubricant amount	:	-	-					
Lubricant type	:	Mobil Polyrex EM						
Rev.	Changes Summary		Performed	Checked	Date			
Performed by								
Checked by				Page	Revision			
Date	24/02/2025			1 / 2				

DATA SHEET

Three Phase Induction Motor - Squirrel Cage



Customer : _____

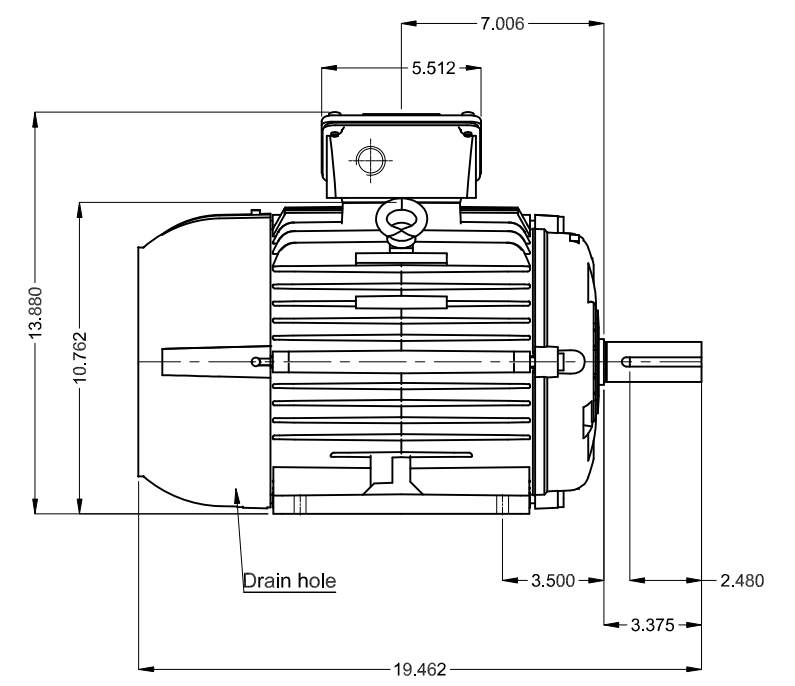
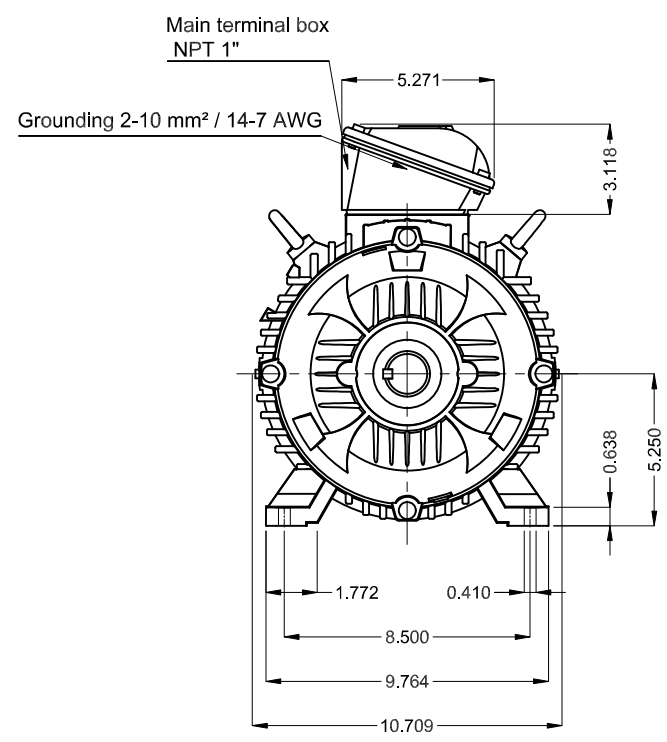
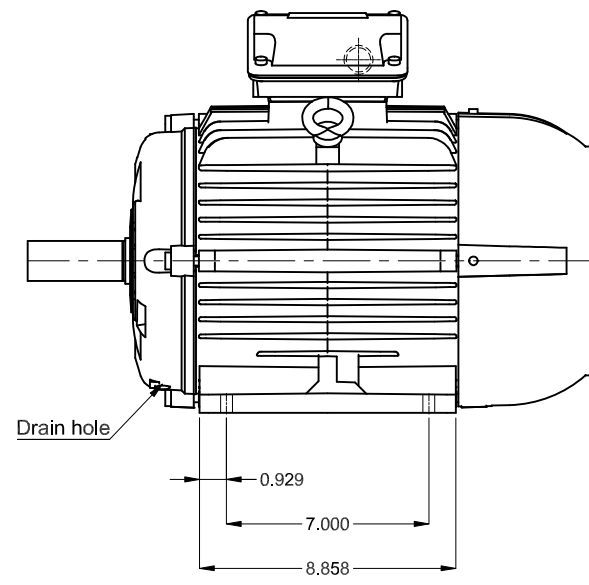
Notes

This revision replaces and cancel the previous one, which must be eliminated.

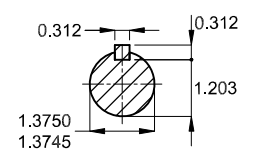
- (1) Looking the motor from the shaft end.
- (2) Measured at 1m and with tolerance of +3dB(A).
- (3) Approximate weight subject to changes after manufacturing process.
- (4) At 100% of full load.

These are average values based on tests with sinusoidal power supply, subject to the tolerances stipulated in NEMA MG-1.

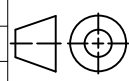

Rev.	Changes Summary	Performed	Checked	Date
Performed by				
Checked by			Page	Revision
Date	24/02/2025		2 / 2	



DE Shaft End



Color RAL 5009
 Painting plan 207A
 Mounting B3T

10 HP 02 Poles 60 Hz										A	
Scale 2 : 13											
								HYBRISUSER		00	
ECM	LOC	SUMMARY OF MODIFICATIONS					EXECUTED	CHECKED	RELEASED	DATE	VER
EXECUTED	HYBRISUSER	 THREE PH. MOTOR W22 NEMA PREM. EFF. FRAME 215T IP55 TEFC					PREVIEW				
CHECKED							WDD	00			
RELEASED							SHEET	1 / 1			
REL. DATE											